

# MDF OEM MDF



Material	MDF
Product Name	OEM MDF
Model	DT-WF6
Dimensions	800x350x1700mm
Color	White
Finish	Smooth, Matte
MOQ	100PCS
Thickness	9 ~ 18mm
Width	7 ~ 12m
Length	25 ~ 30m
Weight	12KG / 20MM EPS
Lead Time	7 - 10 days
Incoterms	EXW, FOB, CIF
Payment	T / T : 30 % + 70 % , PayPal, Western Union
Notes	Standard size and color.
	Weight: 12KG 20MM EPS
	K = K









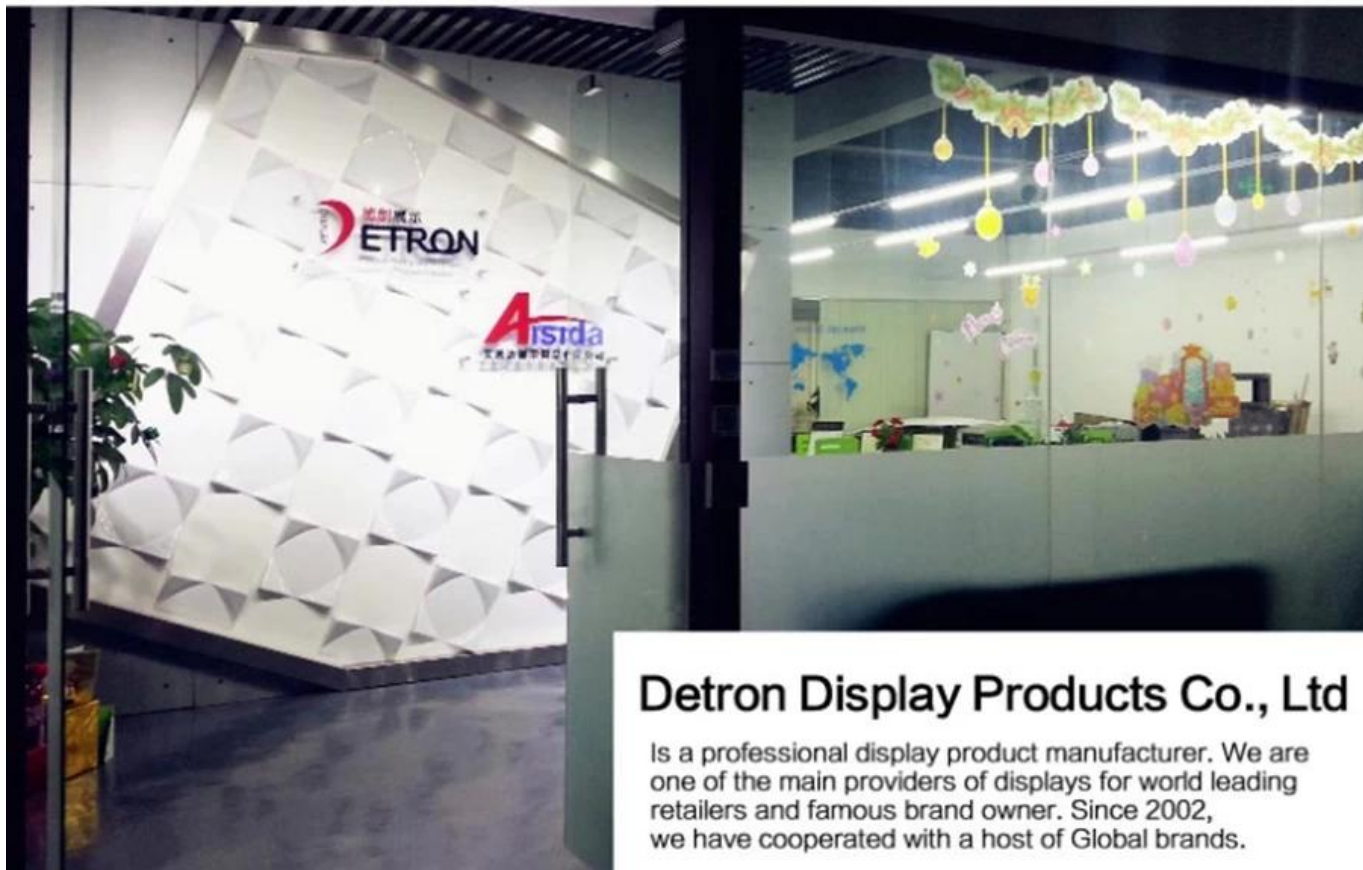












## Detron Display Products Co., Ltd

Is a professional display product manufacturer. We are one of the main providers of displays for world leading retailers and famous brand owner. Since 2002, we have cooperated with a host of Global brands.







**When we efforts, the whole world will make way for us**  
Work devotion, recreation participation, everything to do everything, and this is our!





# The wood workshop





# Metal workshop





## Acrylic workshop



## screen printing workshop





Detron 2002 manufacturers. Since 2002 Detron 2002 manufacturers, Detron 2002 manufacturers.

Detron 2002 manufacturers Detron 2002 manufacturers Detron 2002 manufacturers.

1. Detron 2002 manufacturers :

- 1) Detron 2002 manufacturers, Detron 2002 manufacturers, Detron 2002 manufacturers.
- 2) Detron 2002 manufacturers : Detron 2002 manufacturers 5 Detron 2002 manufacturers 100 Detron 2002 manufacturers Detron 2002 manufacturers. Detron 2002 manufacturers 2000 Detron 2002 manufacturers.
- 3) Detron 2002 manufacturers Detron 2002 manufacturers POP Detron 2002 manufacturers Detron 2002 manufacturers. Detron 2002 manufacturers 10 Detron 2002 manufacturers Detron 2002 manufacturers.

2. Superior Detron 2002 manufacturers :

- 1) Detron 2002 manufacturers 2002 Detron 2002 manufacturers IOS9001 Detron 2002 manufacturers Detron 2002 manufacturers.
- 2) Detron 2002 manufacturers Detron 2002 manufacturers Detron 2002 manufacturers Detron 2002 manufacturers Detron 2002 manufacturers Detron 2002 manufacturers.
- 3) Detron 2002 manufacturers "Detron 2002 manufacturers, Detron 2002 manufacturers, Detron 2002 manufacturers, Detron 2002 manufacturers, Detron 2002 manufacturers Detron 2002 manufacturers" Detron 2002 manufacturers Detron 2002 manufacturers.

□□□ □□ □□□ □□□□□. □□ □□□ □□□ □□□ □□□□□!



- 1. Final packaged: K=K 5 layers carton, hardcard to enhance the safety of cartons.
- 2. Inner pack: styrofoam, paper card, Moisture-proof bag.
- 3. The package anti-shock, passed international diop text.



①



②



③



④

▲ ⑤



□□ Detron □□□□□ □□ □□ □□ □□ □□□, □□, □□□□□ □□□ □□□ □□ □□□□□.

□□□ □□□ □□ □□ □□□ POP □□□□□□ □□ □□□ □□ □□□ □□ :

□□ & □□ □□ (□□ □ □□ □□) □□□□ □□, □□ □□, □□ (□□□, □□□, □□) □□ □□□□.





## FAQs

**Q1.** 00 0000 00 0 00000?

**A1.** 000000 00 00000 0000 00000 0 24 00 0000 00 0 0 00000.

**2** 00000000 00 0000 000000?

**A2**(1). 00 (2). 00 00 (3). 00 00 (4). 00 (5) .Inspecton (6). 00 (7). 000

**3** 000000 0000 0000 00 0 0 00000?

**A3**(1) 0000 0000 00 00000 00 0 00000.

(2). 00 0 00 0000 00 0 0000 00 00 0000 00 0000 00 00000000.

(3). 0000 00 00000 0 0000 00 QC 00 00.

(4). 00 00 0 00 00 0000 QC.

4 如何選擇匯款方式?

A4 匯款方式包括電匯 (TT) 及信託匯票 (MT) 等。電匯匯款速度較快，但手續費較高。信託匯票匯款速度較慢，但手續費較低。選擇匯款方式時，應考慮匯款金額、匯款速度及手續費等因素。

Q5 如何選擇快遞公司?

A5 快遞公司包括 EMS、UPS、DHL、TNT 及 FEDEX 等。選擇快遞公司時，應考慮快遞速度、快遞費用及快遞服務等因素。EMS 快遞速度較快，但快遞費用較高。UPS、DHL、TNT 及 FEDEX 快遞速度較慢，但快遞費用較低。

如何選擇匯款及快遞公司，請參考 [匯款及快遞公司選擇指南](#)。